

LOANER INSTRUMENTS MANAGEMENT

Vishal Tandel
CSSD Manager – NMC Specialty Hospital – Al Ain
MBA (Hospital Administration), DBM

Loaner Instruments Managements

Culture of Ownership : A NMC Specialty Hospital, Al Ain Hospital experience



Loaner Instruments Managements

In this Presentation a points will be:

- Definition of loaner Instruments
- Why we need Loaner Instruments ?
- Who all are involved in this process?
- Time Limitation to receive Loaner Instruments & why?
- Cleaning and Sterilization Methods
- CSSD,OR & Vendor Responsibilities
- Other Challenges to facilities
- Advantage & Disadvantage Of Loaner Instruments

Definition : Loaner Instruments

Definition : Loaner instruments, or loaner trays, are defined as trays or instruments not purchased by the facility. Companies often supply specialized instruments for uncommon surgeries (such as spinal, THR & TKR).

Although loaner instruments remain the property of the vendor, the facility is responsible for paying for its temporary use and maintenance until it is sold by the vendor

Loaners can be from another hospital (tray/set borrowed from another facility), doctors instruments (not owned by the hospital), instrument company (Orthopedic, Neuro) and a loaner can be for an instrument that is being repaired, instruments on consignment.



Why we need loaner Instruments ??

It is not practical for a medical facility to own every instrument that is wanted or needed. The facility may need to borrow an instrument for a procedure that is not performed very often, or is a specialty, because it is not cost effective to buy the instrument for rare cases. There may also be a lack of storage space, and there are ever-changing technologies that launch new instruments and make existing ones outdated. .



Who are Involved In Loaner Management Process ??

- **User Department (OT) / Surgeons**
- **Vendor**
- **Store/Purchase**
- **CSSD**
- To avoid any major problem (delay case): Among these four departments should have proper communication
- These four department should develop a procedure for requesting loaner instruments, procedure for processing loaner instruments, develop a communication tools, & should create policies.
- Always do work as a team work



With proper communications develop Policies & Procedure

Plan

- Scheduled procedure by surgeon.
- Surgeon or office staff requests type of loaners sets required or orders direct from vendor

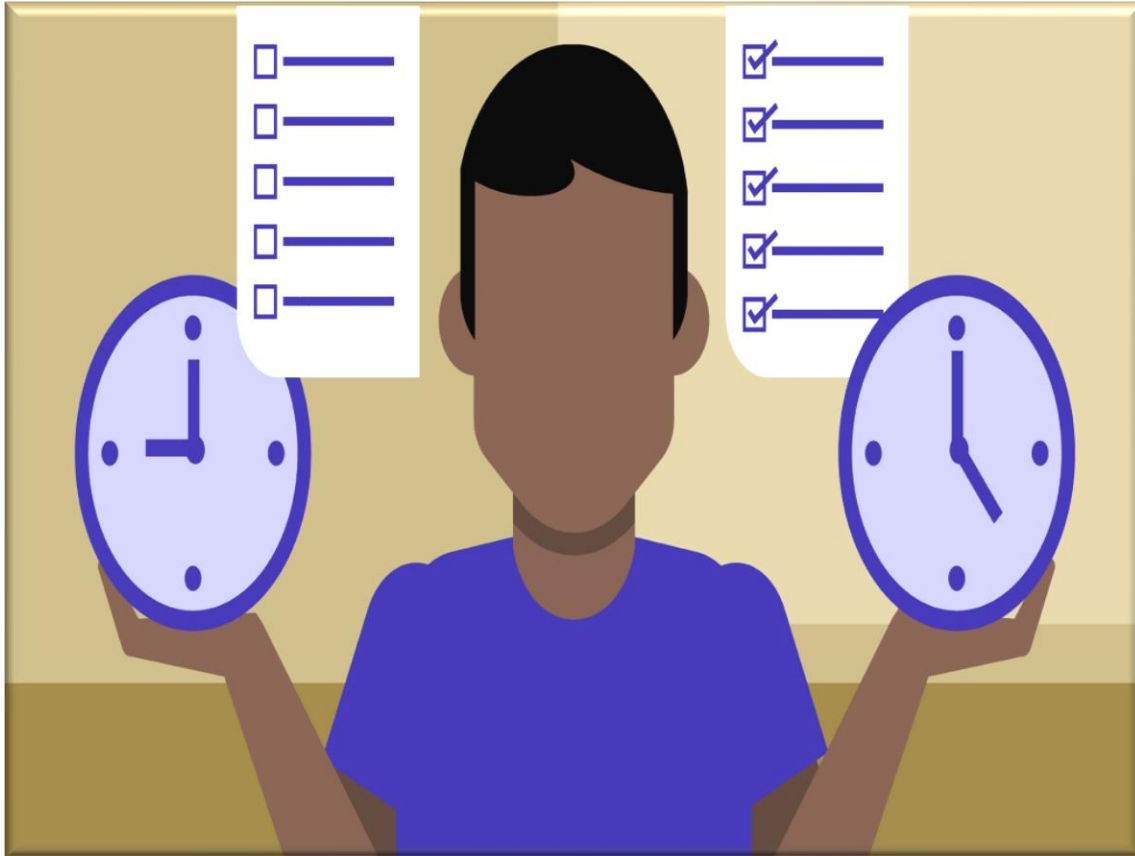
Process

- CSSD receives inventory lists preferably with pictures & process.
- Sterile loaner sets are delivered to OR & used in procedure

Return

- Soiled loaner sets are returned to the CSSD
- Loaner sets are cleaned & returned to vendor with decontamination certificate or kept in holding area until vendor pick up.

When to Order , How much in advance???



To obtain the loaner instruments in enough time to process as required by the IFUs & AAMI & AORN recommended practices. Policy states that loaner instrument should deliver to the facility's decontamination area at least:

- **Two working days (48 hours) before a scheduled case for existing sets**
- **Three working days (72 hours) for new sets.**

Current Challenges to facilities



- Condition of Instruments
- Completeness of trays
- Container condition & space
- Weight of sterilizing container
- One tray for instruments & Implants
- Staff safety (Ergonomics)

Condition of Loaner Instruments



CRACK



STAIN

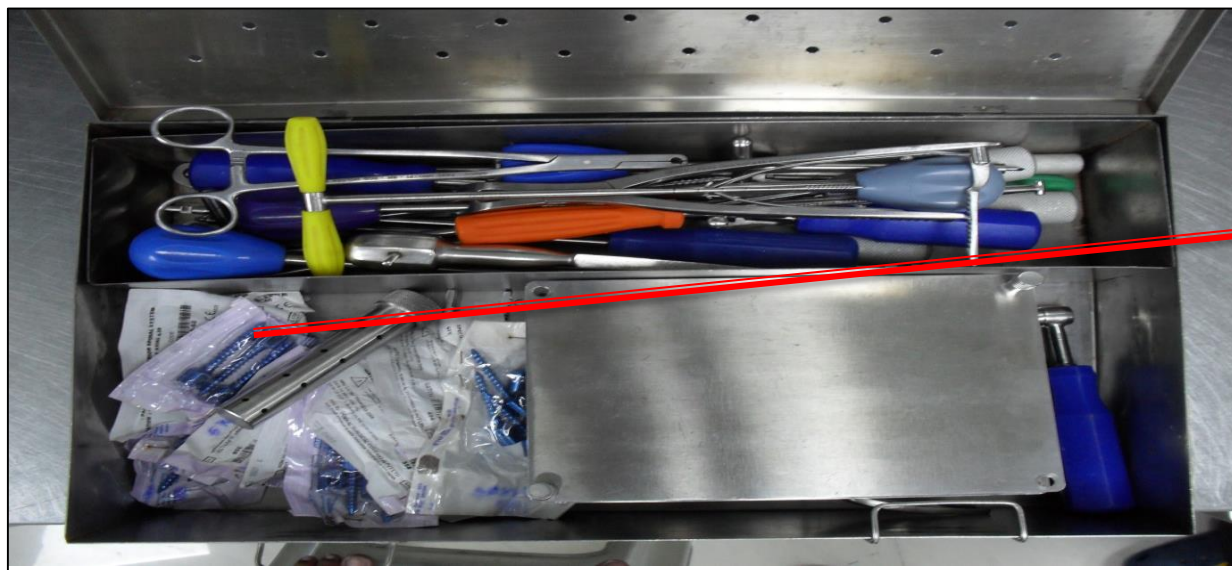


RUST

Upon receiving of loaner instruments always check crack, stain, rust etc.



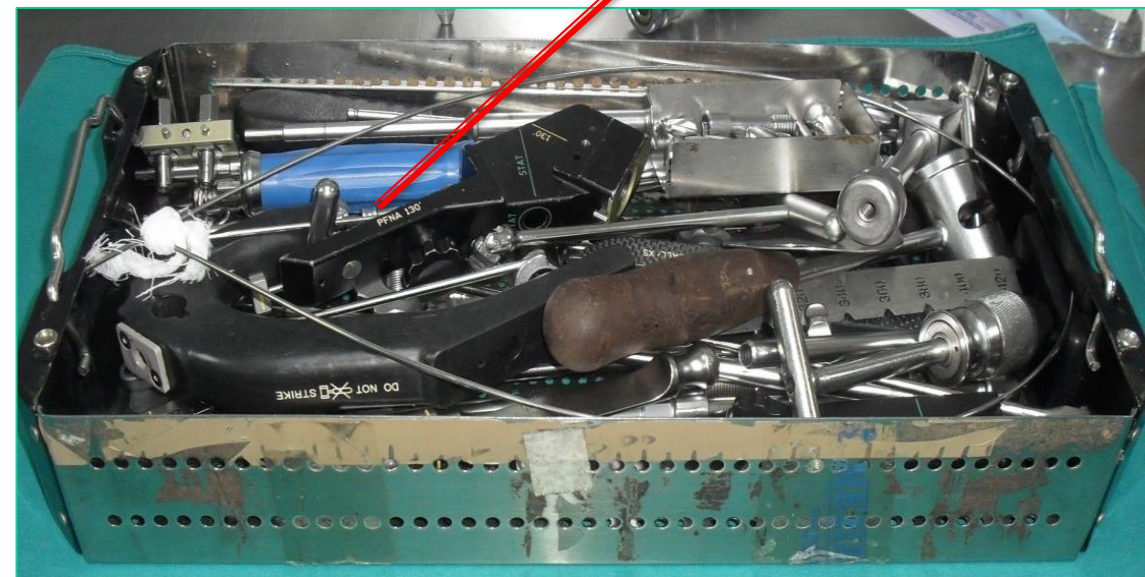
Receiving of Loaner Instruments



CAN YOU RELATE and IS THIS CORRECT?

PEEL POUCH

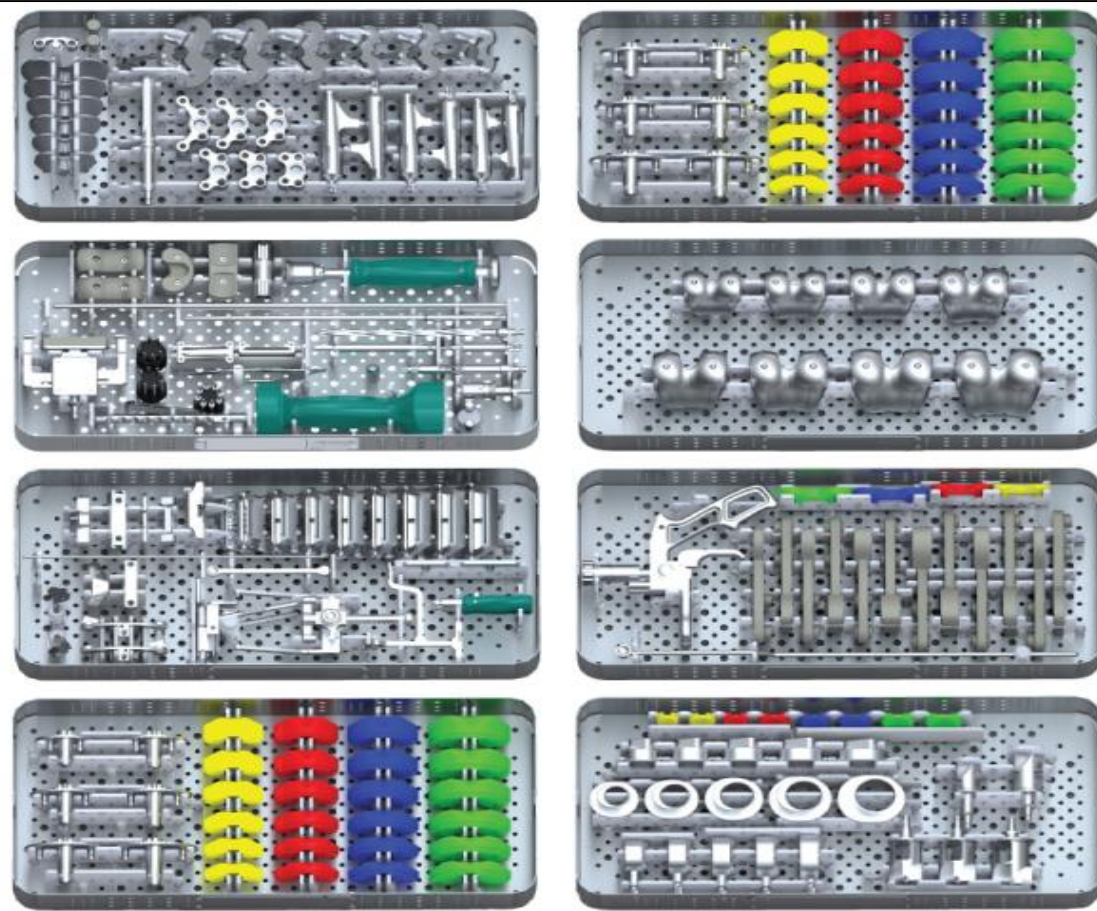
Un-organized Instruments



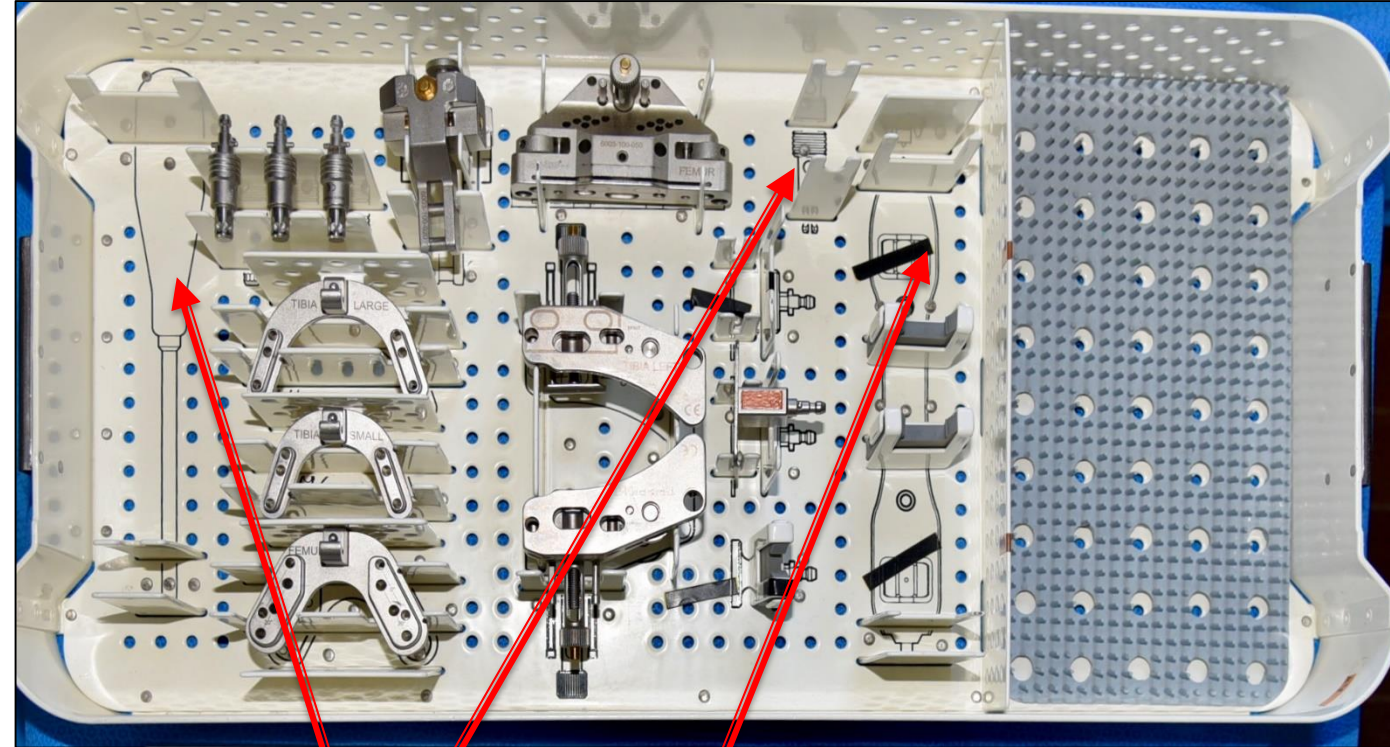
Loaner Sets should never have peel pouches in the container

The instruments should be organized and should have special tray for the same

Completeness of trays

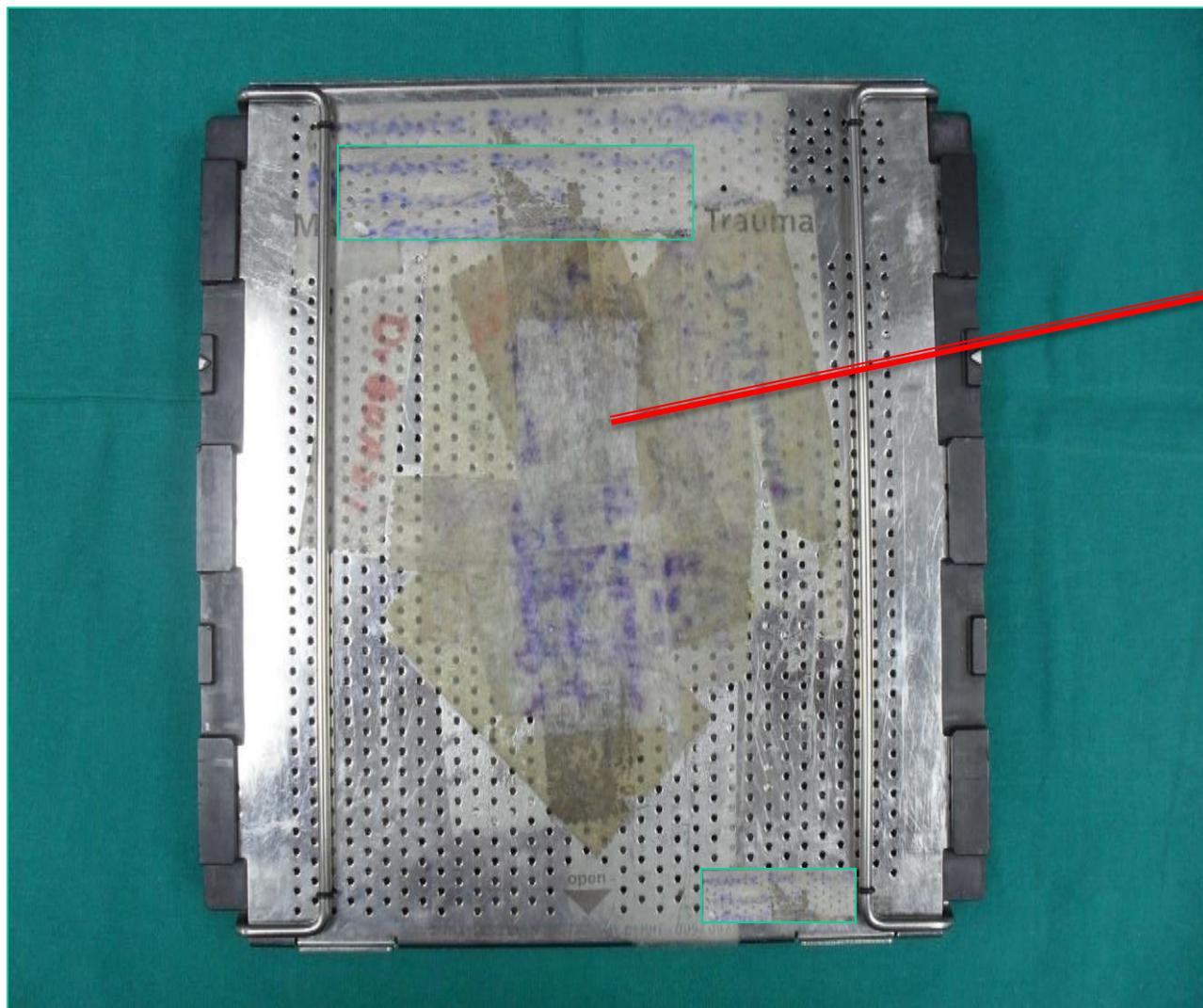


- ✓ All set should be complete as per requirement
- ✓ Always see weather instruments are available in place or not.



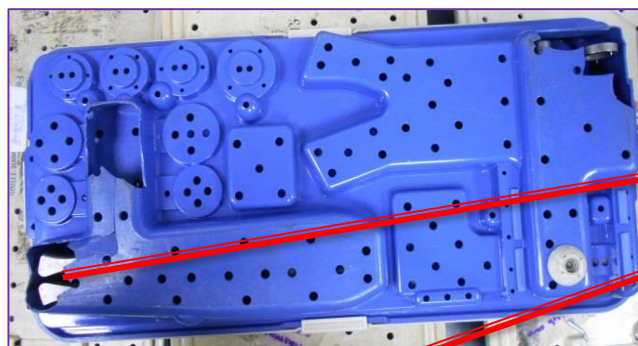
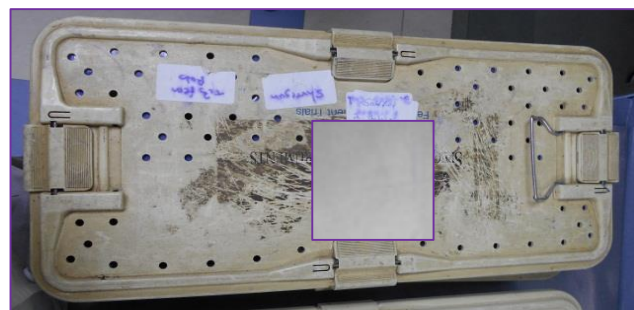
- Incomplete sets i.e. missing / less instruments can be affect on scheduled surgery
- While counting / checking any mismatch found as per list please informed to vendor or keep communication with user department.

Condition of trays



The Container should not have any adhesive residues, use an adhesive remover to remove adhesive layer or return the sets back to Vendor

Container condition & space



BROKEN CONTAINERS

All Containers should be in a good condition, should have enough space for instruments

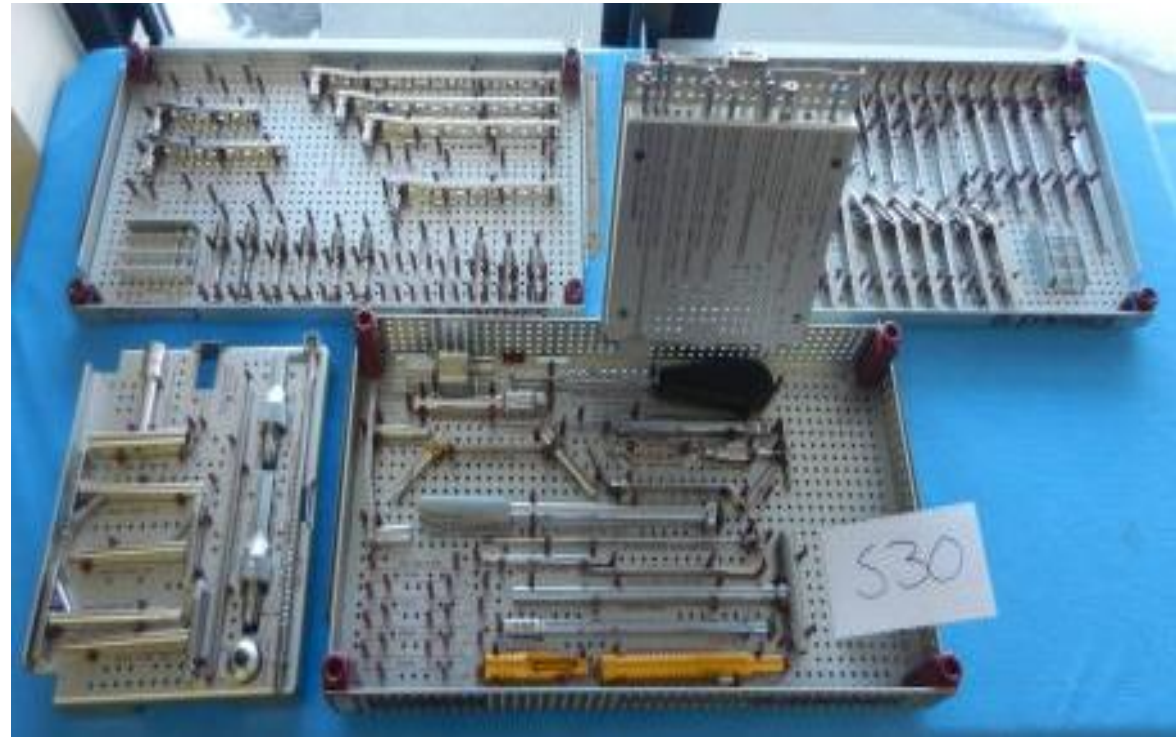
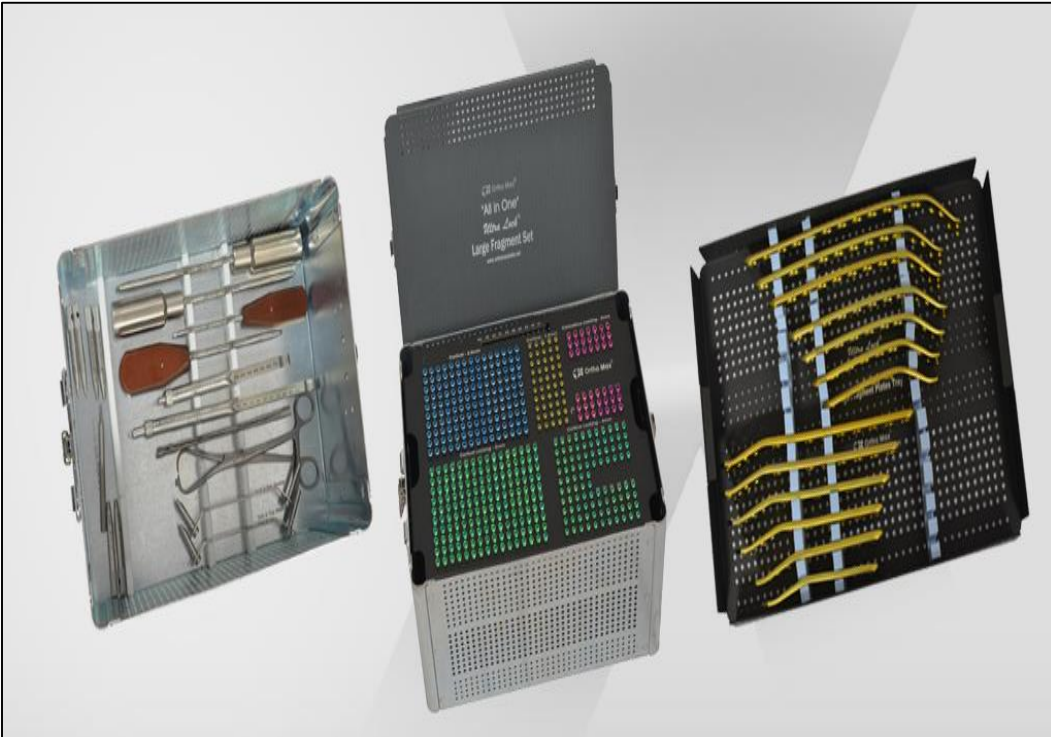
Weight of sterilizing sets



- Have your loaner sets been weighed for compliance with AAMI ST-77 recommendations?
- Excessive weight of sets and overloading the sterilizer are major contributors to wet sets.

- ✓ The **maximum recommended tray weight is 25 pounds (11.33 Kilogram)**, per AAMI and NIOSH guidelines.
- ✓ All **trays** should allow CS professionals to use safe body mechanics during handling.

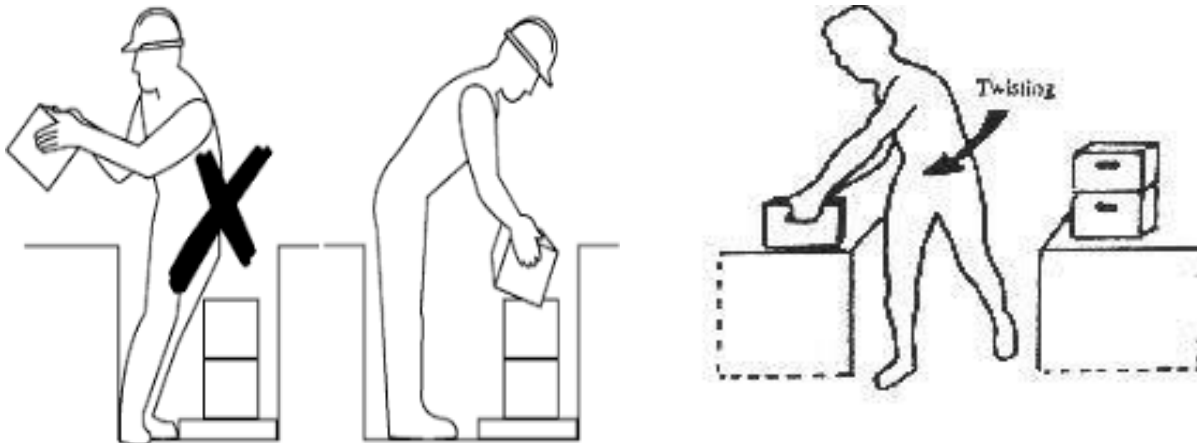
One Tray Contain Instruments & Implants



- Sometimes CSSD receive loaner sets which contain instruments as well as implants, in such scenario it is difficult to keep track of Implants
- Keep proper track of BI incubation time

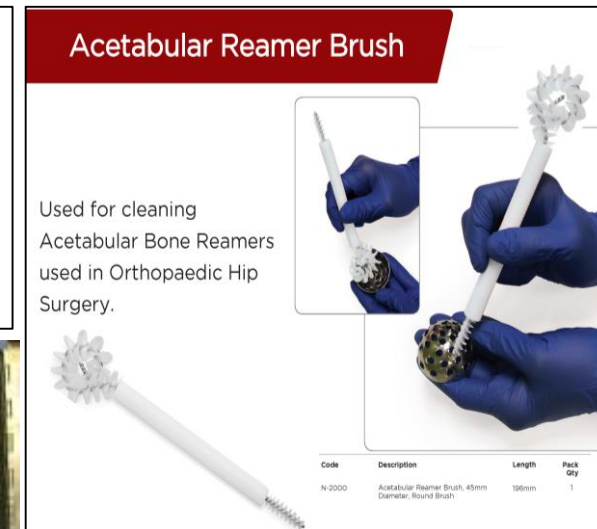
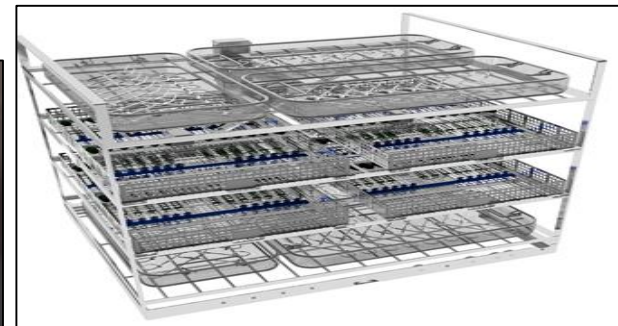
Ergonomic Training

- Training for safety to all staff how to lift heavy loaner sets
- Proper ergonomics in the workplace reduces employers cost as we can avoid injury
- Ergonomics improve productivity & quality



Cleaning Methods

- Instrument trays are to be reprocessed in accordance with manufacturers instructions (IFU)
- Vendors should recommend proper detergents and chemicals that are safe and effective
- Multi-component instruments are disassembled, checked and appropriately cleaned (systematic loaded in WD)
- Notify supplier / company, should any instrument be difficult to clean or to reprocess
- Inspect all instruments for cleanliness especially lumens / holes. Use appropriate bristle brush.



Flexible Reamers

Sterilization Methods

- IFU cleared manufacturer written instructions for cleaning, packaging and sterilization should be available
- Should load proper on loading trolley.
- Identify loaner sets with implants for BI incubation
- Quarantine the sets unless negative results are achieved.



Storage of Sterile Loaner Sets

- AAMI ST-79 does not recommend stacking of wrapped sets.
- Do you stack sets in your department/area? How do you send your loaner sets to the OR?
- Are they stacked on a cart? What does the OR do with them when they get there?
- Have you followed the sets to see what is happening to them?
- Understand that each stacked set applies pressure to the tray beneath it. When there are multiple sets (of approximately 25 pounds each) 4 stacked sets are applying 100 pounds of pressure to the packaging on the bottom which can damage the packaging material. Understand that a set with a compromised wrapper is of no use to the OR. Stacking of sets is a major contributor to damaged packaging.



Easy Identification for Loaner Sets

- In your facility , if you are receiving more loaner sets. Then for easier identification, loaner sets can be pack in different color wrapping sheets.
- In our hospital normally we are using blue color wrapping sheets for all surgical sets. Sometimes it is difficult to find out which are loaner sets, now we have started to use different color code wrapping sheets. Due to this it become easy to find out for CSSD & OR Staffs.




Decontamination Declaration / Certificate

- After procedure, to avoid airborne / cross contamination & for safe transportation CSSD always decontaminated all used loaner sets.
- With decontaminated loaner sets, facility should give decontamination certificate to the vendors .So that vendor can give assurance to the other facility that same sets have been decontaminated & are safe to handle.

Synthes Medical
Surgical Equipment
& Instruments
Trading LLC

19th Street, Oud Metha
P.O. Box 30600, Dubai
United Arab Emirates

Tel. +971 434 26 111
Fax. +971 434 26 110



DECONTAMINATION CERTIFICATE

I hereby certify that (please tick appropriate box):

A. ☐ The enclosed product/instrument has not been used in an invasive procedure or been in contact with blood or other body fluids.

B. ☐ The enclosed product/instrument has been used in an invasive procedure or been in contact with blood or other body fluids. It has been cleaned and decontaminated. The method of decontamination was:

(Please detail):

.....

.....

.....

.....

Date:.....

I declare that I have taken all reasonable steps to ensure the accuracy of the above information.

Signature: _____

Print Name: _____

Hospital/Company Name _____

DO NOT AUTOCLAVE PLASTIC COMPONENTS –
SOAK IN A SUITABLE DECONTAMINATION FLUID AS PER INSTRUCTIONS
FOR USE.

Received sterile sets from other facility

- In case of emergency can we receive sterile sets from one facility to another facility?



- If a sterile set or tray have been received by another facility there is no guarantee that instruments have been properly cleaned or not, disinfected & sterilized. So even though vendor says that sets are sterile do not receive, process all sets as per guidelines.

Other Challenges Of Loaner Instruments To Facilities

- **Unexpected instruments arrive when you are not prepared**
- **Expected instruments that don't arrive**
- **Not sure which company representative to call when there is a problem**
- **Delays in instruments processing**
- **Unclear or unavailable IFU**
- **Loaner instruments that cannot be found in the OR when needed**



Scheduled Cases for Loaner Instruments (Orthopedic & Spinal)



➤ Scheduling - For orthopedic and spinal cases

Most often 10-30 loaner trays are brought for a single case. If multiple cases are scheduled for the same day, this impacts on SPD's ability to process all the loaners in addition to the processing for the other scheduled cases.

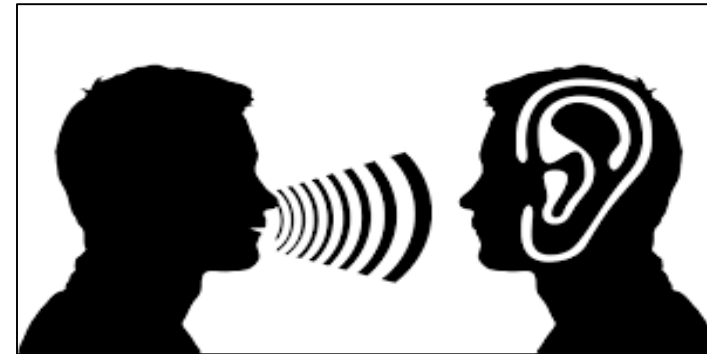
It is important for vendors to understand that they must cooperate by delivering the instruments in sufficient time to permit complete processing according to their IFUs.

- Loaner sets often acquired on a just-in-time basis that precludes proper preparation of the instruments before surgical case, & shortcuts can be taken in the rush to get the trays to the operating room, thus jeopardizing patients outcomes.

Three C s

The way for healthcare system to avoid all issues discussed above is by adhering to the three Cs :

Communication



Collaboration



& Control



Role of CSSD

Request for IFU before instruments are received in CSSD.



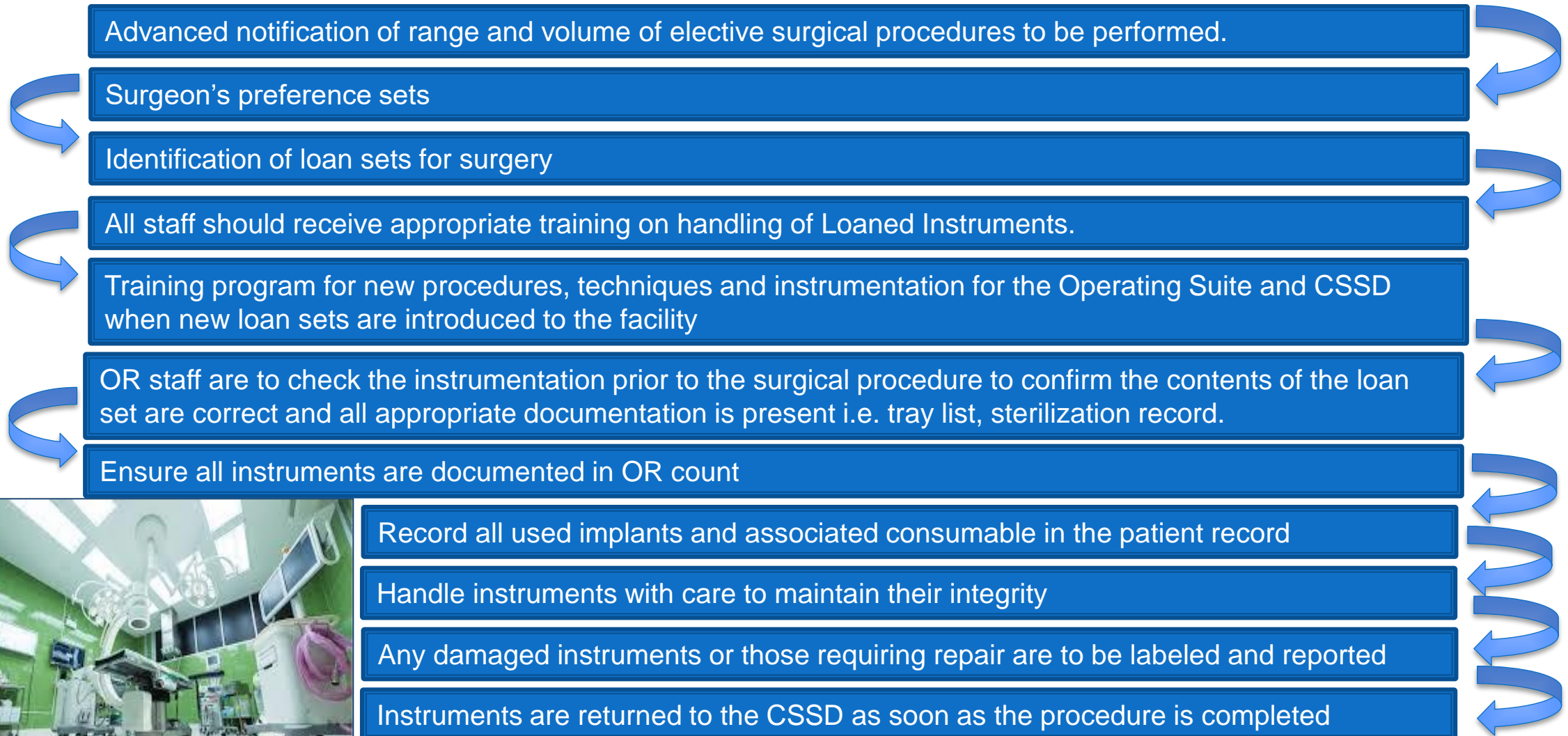
The loan set instruments are to be checked prior to the reprocessing to confirm the contents are correct and all appropriate documentation is present (i.e. tray list preferably with picture & name)

Multi-component instruments are disassembled, checked and appropriately cleaned

Instrument trays are to be reprocessed in accordance with manufacturers instructions

Ensure the loan sets are delivered to the Operating Rooms (OR) with all documentation i.e. Vendor name, set name with lists, surgeon name, surgery date, sterilization records

Roll of OR



Roll of Vendor / Supplier

Instruments provided in loan sets should comply with the specifications in order.

There should be sufficient inventory to meet demand without reducing delivery time

Provide assurance that the instruments supplied in the loan set are clean, functional and in optimal working order

Ensure that the instrument trays are designed and loaded so that they weigh no more than 25 pounds

Provide transport cases that are delivered in a clean and well maintained state

Provide Manufacturer Instructions for cleaning and sterilizing of instruments in accordance to STANDARDS before delivery of Instrument.

Ensure that tray lists and graphic photos are accurate and correspond with trays provided

Trays and containers should be able to be cleaned, sterilized and dried

Ensure a system is in place for tracking the loan set back to a facility

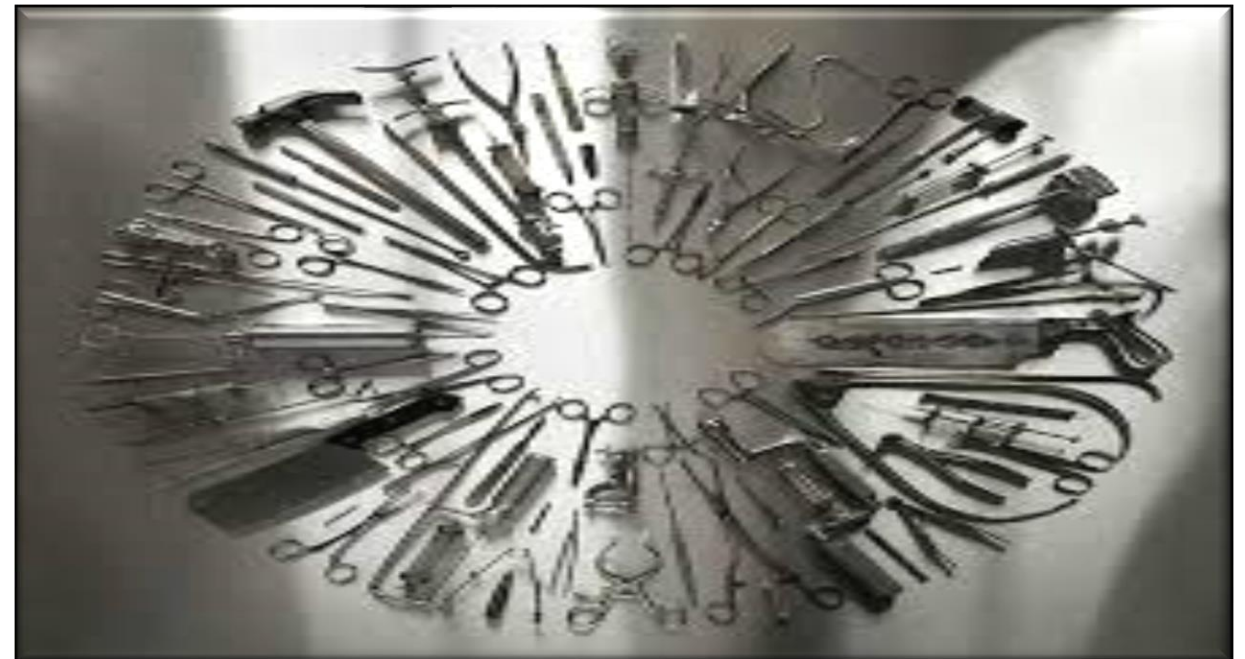
Provide in-service education

Ensure vendor understand outgoing loaner trays will not be given priority processing ahead of facility sets but will be processed in normal turn.



Other Consideration

1. What is unique to your facility's policy on management of loaner instruments?
2. When was the last time you read your department policy?
3. When was the last time you read the manufacturers IFU?
4. Are all policies accountable for their respective responsibilities?



To Loan or not to Loan???

To loan, or not to loan is depend upon the facility

The entire team ensures that appropriate cleaning & sterilization practices are consistently carried out thereby providing the best possible outcome for our patient

Finally... Patient safety is our goal



“Good surgical results depend upon the sterile instruments, in good working order, used by skilled people...”



~~Do you have any questions?~~

Ask me a question

Vishal Tandel
CSSD Manager, NMC Specialty Hospital – Alain
MBA (Hospital Administration), DBM
971 – 528296997
Vishal.tandel@nmc.ae
Vishalvs7@ymail.com